



# State Board of Education School Report Card for 2005-2006

## Julian Harris Elementary School

### State Board of Education Members

Gov. Bob Riley, Board President  
Randy McKinney, President Pro Tem, District 1  
Betty Peters, District 2  
Stephanie Bell, District 3  
Dr. Ethel Hall, Vice President Emerita, District 4  
Ella Bell, District 5  
David F. Byers, Jr., District 6  
Sandra Ray, Vice President, District 7  
Dr. Mary Jane Caylor, District 8  
Joseph B. Morton, Superintendent of Education

### Principal

Mr. William Kimbrell

### Superintendent

Dr. Samuel L Houston

### School Board Members

Dr. Charles E Elliott  
Mr. Tommy Sykes  
Mrs. Karen Duke  
Mr. Dwight Jett Jr  
Mrs. Carol Sandlin

Julian Harris Elementary School  
1922 McAuliffe Dr SW  
Decatur, AL 35603-1051  
(256) 552-3096

*Report cards are prepared by the Alabama Department of Education.  
For more information including a glossary of terms, grading scales, and  
detailed data, visit the SDE Web site Accountability Reporting System at:  
<http://www.alsde.edu/Accountability/preAccountability.asp>*



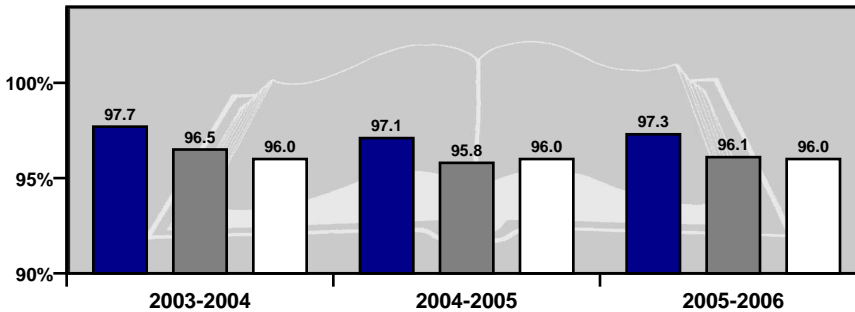
# GENERAL INFORMATION

## Average Daily Membership

This is the average number of students on attendance rolls during the first 20 days of school after Labor Day.

Year	ADM
2005-2006	502.5
2004-2005	483.1
2003-2004	474.6

% School ■ % System ■ % State □



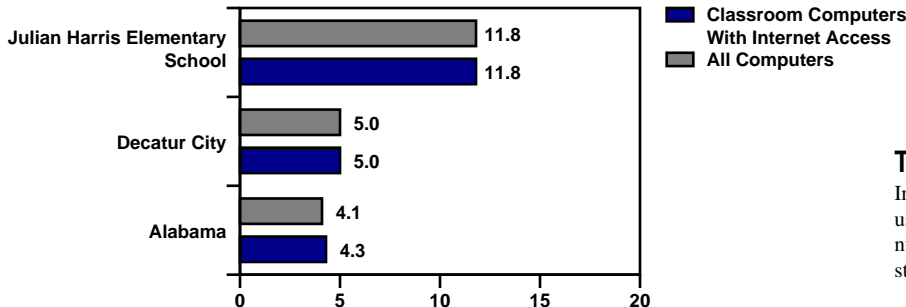
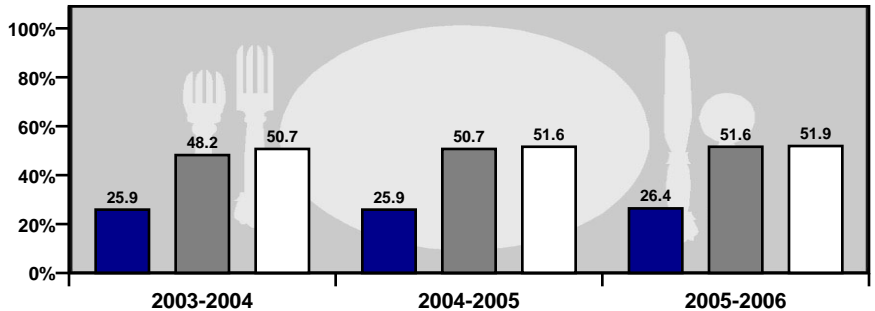
## Average Daily Attendance

This is the percent of students that attend school each day.

## Students Eligible for Free or Reduced Price Meals

This is the percent of students that applied for and were approved as reported on the Fall Attendance Report. It is an indicator of poverty.

% School ■ % System ■ % State □



## Technology

Internet access and computer use in schools. A lower number indicates greater student access to technology.

# GENERAL INFORMATION

## Teacher Qualifications

This table shows the percentage of teachers holding each level of certification as issued by the Alabama Department of Education for this school in 2005–2006.

6-Year (Class AA) through Doctorate	Master's Degree (Class A)	Bachelor's Degree (Class B)	Alternative	Emergency
5.9%	58.8%	35.3%	0.0%	0.0%

Percentage of All Elementary and Secondary Teachers with Alternative or Emergency Certification	0.0%
---	------

## Staffing

Each school is staffed with full- and part-time faculty and staff. In 2005-2006, this school employed the following professionals.

	School	System	State
Teachers	31.0	634.0	47,319
Counselors	1.0	30.0	1,814
Librarians	1.0	20.0	1,404
Administrators	1.0	29.0	2,601
Nurses	0.0	0.0	765
Instruction Assistants	3.0	119.8	6,774
Other (certified)	0.0	30.0	1,778
Support Staff	7.0	356.3	29,083

## Safety & Discipline

The following table shows the types of discipline problems that have occurred at this school and what actions were taken in 2005-2006.

Type of Incident	Number of Incidents Reported	Action Taken		
		Suspension	Expulsion	Sent to Alternative School
Assault	0	0	0	0
Bomb Threat	0	0	0	0
Drug Related	0	0	0	0
Weapon Related	0	0	0	0

As required by federal law, students must be allowed to transfer to another school if their school is identified as persistently dangerous.

Is this a transfer option school? **NO**

# GENERAL INFORMATION

## Highly Qualified Teachers

This is the percent of teachers that are teaching and the percent of classes taught in a core subject for which the teacher is highly qualified by the State of Alabama as required by the federal legislation known as: No Child Left Behind.

CLASSES	Total Classes		Current Percentage Taught By Highly Qualified Teachers		Current Percentage Not Taught By Highly Qualified Teachers	
	2004-2005	2005-2006	2004-2005	2005-2006	2004-2005	2005-2006
SCHOOL	2004-2005	2005-2006	2004-2005	2005-2006	2004-2005	2005-2006
Elementary Classes	110	116	85.5	100	14.5	0.0
Secondary Classes	No Data	No Data	No Data	No Data	No Data	No Data
TOTAL CLASSES	110	116	85.5	100	14.5	0.0
SYSTEM	2004-2005	2005-2006	2004-2005	2005-2006	2004-2005	2005-2006
Elementary Classes	1,328	1,342	83.1	96.4	16.9	3.6
Secondary Classes	944	1,086	86.6	88.8	13.4	11.2
TOTAL CLASSES	2,272	2,421	84.5	93.0	15.5	7.0
STATE	2004-2005	2005-2006	2004-2005	2005-2006	2004-2005	2005-2006
Elementary Classes	85,513	97,672	84.8	94.9	15.2	5.1
Secondary Classes	67,979	60,824	77.8	84.2	22.2	15.8
TOTAL CLASSES	153,492	158,496	81.8	90.8	18.2	9.2

TEACHERS	Total Teachers		Current Percentage Highly Qualified Teachers		Current Percentage Not Highly Qualified Teachers	
	2004-2005	2005-2006	2004-2005	2005-2006	2004-2005	2005-2006
SCHOOL	2004-2005	2005-2006	2004-2005	2005-2006	2004-2005	2005-2006
Elementary Teachers	27	29	85.2	100	14.8	0.0
Secondary Teachers	No Data	No Data	No Data	No Data	No Data	No Data
TOTAL TEACHERS	27	29	85.2	100	14.8	0.0
SYSTEM	2004-2005	2005-2006	2004-2005	2005-2006	2004-2005	2005-2006
Elementary Teachers	333	332	81.1	95.5	18.9	4.5
Secondary Teachers	216	216	74.1	84.3	25.9	15.7
TOTAL TEACHERS	549	548	78.3	91.1	21.7	8.9
STATE	2004-2005	2005-2006	2004-2005	2005-2006	2004-2005	2005-2006
Elementary Teachers	34,303	24,219	84.8	93.4	15.2	6.6
Secondary Teachers	15,057	15,533	70.5	80.6	29.5	19.4
TOTAL TEACHERS	49,360	39,752	80.4	88.4	19.6	11.6

High Quality Professional Development							
Total Surveyed		Received High Quality Professional Development		Did Not Receive High Quality Professional Development		PCT With Professional Development	
2004-05	2005-06	2004-05	2005-06	2004-05	2005-06	2004-05	2005-06
24	23	24	23	0	0	100.00	100.00

Instructional Paraprofessionals in Title I-Funded Schools							
Total Instructional Paraprofessionals		Total Qualified		Total Not Qualified		PCT Qualified	
2004-05	2005-06	2004-05	2005-06	2004-05	2005-06	2004-05	2005-06
0	0	0	0	0	0	0.00	0.00

## Adequate Yearly Progress Status for 2006-2007 Based on School Year 2005-2006 Data

State Accountability in Alabama is based on the federal law known as the “No Child Left Behind” Act (NCLB) of 2001. NCLB uses the term Adequate Yearly Progress (AYP) to describe whether a school or system has met its annual accountability goals.

### COMPONENTS OF AYP

1. Annual Goals for Reading and Mathematics
  - Percentage of students scoring proficient or higher
2. Participation Rate
  - Percentage of students participating in assessments
3. Indicators Affecting Academic Proficiency
  - Attendance
  - Graduation Rate (or improvement on the Dropout Rate)

### ASSESSMENTS USED IN DETERMINING AYP

- Alabama Reading and Mathematics Test (ARMT)
  - Reading: Grades 3–8
  - Mathematics: Grades 3–8
- Alabama High School Graduation Exam (AHSGE)
  - Reading: Grade 11
  - Mathematics: Grade 11
- Alabama Alternate Assessment (AAA)
  - Reading: Grades 3–8 and 11
  - Mathematics: Grades 3–8 and 11

For more detail on the Alabama Accountability System, please reference the Accountability Interpretive Guide which can be found on the SDE Web site:

<http://www.alsde.edu/Accountability/preAccountability.asp>

Select the Accountability Reporting option on the home page. Then request the School Year: 2005-2006 Report: 2006 Interpretive Guide for State Accountability

# STATE ACCOUNTABILITY

## Adequate Yearly Progress Status for 2006-2007

Based on School Year 2005-2006 Data

2006-2007 AYP Status: Made AYP

2006-2007 School Improvement Status: Not in School Improvement

*This School met 17 AYP Goals out of 17 (100.00%)*

### READING

2006-2007 AYP Status: Made AYP

Reading School Improvement Status: Not in School Improvement

Student Group	Percent Participation Goal = 95.00%	Met Participation Goal	Proficiency Index Goal = 0.00	Met Proficiency Goal*
All Students	100	Yes	21.69	Yes
Special Education	100	NA	10.33	NA
American Indian/Alaskan	No Data	No Data	No Data	No Data
Asian/Pacific Islander	100	NA	~	NA
Black	100	Yes	13.46	Yes
Hispanic	100	NA	~	NA
White	100	Yes	23.73	Yes
Limited-English Proficient	100	NA	~	NA
Free/Reduced Meals	100	Yes	17.71	Yes
Displaced	No Data	No Data	No Data	No Data

### MATHEMATICS

2006-2007 AYP Status: Made AYP

Mathematics School Improvement Status: Not in School Improvement

Student Group	Percent Participation Goal = 95.00%	Met Participation Goal	Proficiency Index Goal = 0.00	Met Proficiency Goal*
All Students	100	Yes	26.45	Yes
Special Education	100	NA	.58	NA
American Indian/Alaskan	No Data	No Data	No Data	No Data
Asian/Pacific Islander	100	NA	~	NA
Black	100	Yes	14.25	Yes
Hispanic	100	NA	~	NA
White	100	Yes	29.70	Yes
Limited-English Proficient	100	NA	~	NA
Free/Reduced Meals	100	Yes	14.86	Yes
Displaced	No Data	No Data	No Data	No Data

### Additional Academic Indicators

Student Group	Attendance Rate Goal = 95.00%	Attendance Rate Previous Year	Met Attendance AYP*	Graduation Rate Goal = 90.00%	Graduation Rate Previous Year	Met Graduation Rate AYP**
All Students	97.34	N/A	Yes	N/A	N/A	N/A

~ Not reported, less than 10 students (protects confidentiality).  
NA = Not in AYP, less than 40 students (ensures reliability).

\* AYP is met if the goal is met or the goal is within the confidence interval (ensures reliability).  
\*\* AYP is met if the goal is met or there is improvement from the previous year.

# STUDENT ACADEMIC PERFORMANCE

	READING											
	SCHOOL						SYSTEM					
			Level 1	Level 2	Level 3	Level 4			Level 1	Level 2	Level 3	Level 4
	Number Tested	Percent Tested	Percent Not Meeting Standard	Percent Partially Meeting Standard	Percent Meeting Standard	Percent Exceeding Standard	Number Tested	Percent Tested	Percent Not Meeting Standard	Percent Partially Meeting Standard	Percent Meeting Standard	Percent Exceeding Standard
<b>Grade 3</b>												
All Students	82	100.00	0.00	12.20	32.93	54.88	670	99.26	1.64	16.87	37.31	44.18
Special Education	12	100.00	0.00	25.00	58.33	16.67	75	98.68	12.00	40.00	33.33	14.67
American Indian / Alaskan	N/A	N/A	N/A	N/A	N/A	N/A	***	***	***	***	***	***
Asian / Pacific Islander	N/A	N/A	N/A	N/A	N/A	N/A	***	***	***	***	***	***
Black	17	100.00	0.00	29.41	41.18	29.41	205	99.03	1.95	21.95	49.27	26.83
Hispanic	***	***	***	***	***	***	106	98.15	5.66	37.74	37.74	18.87
White	63	100.00	0.00	7.94	30.16	61.90	349	99.71	0.29	7.74	30.09	61.89
Male	41	100.00	0.00	21.95	29.27	48.78	311	99.04	2.89	19.29	35.69	42.12
Female	41	100.00	0.00	2.44	36.59	60.98	359	99.45	0.56	14.76	38.72	45.96
Free / Reduced Meals	29	100.00	0.00	20.69	41.38	37.93	387	99.23	2.07	25.06	44.44	28.42
Limited-English Proficient	***	***	***	***	***	***	87	100.00	5.75	45.98	35.63	12.64
Migrant	N/A	N/A	N/A	N/A	N/A	N/A	***	***	***	***	***	***
Displaced	N/A	N/A	N/A	N/A	N/A	N/A	***	***	***	***	***	***
<b>Grade 4</b>												
All Students	77	100.00	0.00	10.39	28.57	61.04	670	98.97	0.45	19.70	30.00	49.85
Special Education	10	100.00	0.00	30.00	40.00	30.00	77	95.06	2.60	57.14	23.38	16.88
American Indian / Alaskan	N/A	N/A	N/A	N/A	N/A	N/A	***	***	***	***	***	***
Asian / Pacific Islander	***	***	***	***	***	***	10	100.00	0.00	30.00	0.00	70.00
Black	15	100.00	0.00	33.33	53.33	13.33	218	99.09	0.92	29.36	42.66	27.06
Hispanic	***	***	***	***	***	***	90	100.00	1.11	35.56	35.56	27.78
White	56	100.00	0.00	5.36	23.21	71.43	345	98.85	0.00	9.28	21.45	69.28
Male	48	100.00	0.00	12.50	27.08	60.42	338	99.12	0.59	24.26	28.40	46.75
Female	29	100.00	0.00	6.90	31.03	62.07	332	98.81	0.30	15.06	31.63	53.01
Free / Reduced Meals	24	100.00	0.00	12.50	58.33	29.17	381	98.45	0.79	29.92	38.58	30.71
Limited-English Proficient	***	***	***	***	***	***	62	100.00	1.61	53.23	32.26	12.90
Migrant	N/A	N/A	N/A	N/A	N/A	N/A	***	***	***	***	***	***
Displaced	N/A	N/A	N/A	N/A	N/A	N/A	N/A	N/A	N/A	N/A	N/A	N/A
<b>Grade 5</b>												
All Students	85	100.00	0.00	14.12	24.71	61.18	688	97.87	2.91	17.30	29.07	50.73
Special Education	***	***	***	***	***	***	88	88.89	18.18	44.32	23.86	13.64
American Indian / Alaskan	N/A	N/A	N/A	N/A	N/A	N/A	***	***	***	***	***	***
Asian / Pacific Islander	***	***	***	***	***	***	***	***	***	***	***	***
Black	18	100.00	0.00	27.78	38.89	33.33	238	97.94	3.78	23.53	41.60	31.09
Hispanic	***	***	***	***	***	***	91	95.79	9.89	29.67	32.97	27.47
White	63	100.00	0.00	9.52	20.63	69.84	350	98.59	0.57	9.71	20.00	69.71
Male	41	100.00	0.00	17.07	21.95	60.98	358	97.81	3.91	22.35	25.42	48.32
Female	44	100.00	0.00	11.36	27.27	61.36	330	97.92	1.82	11.82	33.03	53.33
Free / Reduced Meals	27	100.00	0.00	29.63	33.33	37.04	372	97.13	4.57	26.08	34.95	34.41
Limited-English Proficient	***	***	***	***	***	***	57	95.00	10.53	47.37	31.58	10.53
Migrant	N/A	N/A	N/A	N/A	N/A	N/A	***	***	***	***	***	***
Displaced	N/A	N/A	N/A	N/A	N/A	N/A	***	***	***	***	***	***

\*\*\* = Less than 10 students tested

N/D = No Data Available

N/A = Not Applicable

N/R = Not Reported

# STUDENT ACADEMIC PERFORMANCE

## MATHEMATICS

SCHOOL						SYSTEM					
		Level 1	Level 2	Level 3	Level 4			Level 1	Level 2	Level 3	Level 4
Number Tested	Percent Tested	Percent Not Meeting Standard	Percent Partially Meeting Standard	Percent Meeting Standard	Percent Exceeding Standard	Number Tested	Percent Tested	Percent Not Meeting Standard	Percent Partially Meeting Standard	Percent Meeting Standard	Percent Exceeding Standard
82	100.00	4.88	17.07	23.17	54.88	667	98.81	4.95	16.94	26.39	51.72
12	100.00	25.00	33.33	8.33	33.33	75	98.68	24.00	29.33	18.67	28.00
N/A	N/A	N/A	N/A	N/A	N/A	***	***	***	***	***	***
N/A	N/A	N/A	N/A	N/A	N/A	***	***	***	***	***	***
17	100.00	17.65	35.29	23.53	23.53	205	99.03	8.29	27.32	28.29	36.10
***	***	***	***	***	***	105	97.22	9.52	21.90	32.38	36.19
63	100.00	1.59	12.70	22.22	63.49	347	99.14	1.73	9.51	23.63	65.13
41	100.00	7.32	12.20	29.27	51.22	311	99.04	6.11	15.43	24.44	54.02
41	100.00	2.44	21.95	17.07	58.54	356	98.61	3.93	18.26	28.09	49.72
29	100.00	13.79	24.14	31.03	31.03	385	98.72	7.27	23.64	29.61	39.48
***	***	***	***	***	***	86	98.85	9.30	22.09	36.05	32.56
N/A	N/A	N/A	N/A	N/A	N/A	***	***	***	***	***	***
N/A	N/A	N/A	N/A	N/A	N/A	***	***	***	***	***	***
77	100.00	0.00	22.08	22.08	55.84	670	98.97	1.64	22.54	21.49	54.33
10	100.00	0.00	40.00	30.00	30.00	76	93.83	9.21	51.32	18.42	21.05
N/A	N/A	N/A	N/A	N/A	N/A	***	***	***	***	***	***
***	***	***	***	***	***	10	100.00	0.00	10.00	20.00	70.00
15	100.00	0.00	53.33	46.67	0.00	217	98.64	2.76	38.25	25.35	33.64
***	***	***	***	***	***	90	100.00	1.11	28.89	30.00	40.00
56	100.00	0.00	14.29	16.07	69.64	345	98.85	1.16	11.01	17.10	70.72
48	100.00	0.00	18.75	22.92	58.33	339	99.41	1.77	23.01	20.94	54.28
29	100.00	0.00	27.59	20.69	51.72	331	98.51	1.51	22.05	22.05	54.38
24	100.00	0.00	45.83	29.17	25.00	380	98.19	2.37	34.21	26.84	36.58
***	***	***	***	***	***	62	100.00	1.61	38.71	33.87	25.81
N/A	N/A	N/A	N/A	N/A	N/A	***	***	***	***	***	***
N/A	N/A	N/A	N/A	N/A	N/A	N/A	N/A	N/A	N/A	N/A	N/A
85	100.00	2.35	14.12	42.35	41.18	689	98.01	1.74	20.03	35.27	42.96
***	***	***	***	***	***	88	88.89	10.23	56.82	26.14	6.82
N/A	N/A	N/A	N/A	N/A	N/A	***	***	***	***	***	***
***	***	***	***	***	***	***	***	***	***	***	***
18	100.00	11.11	11.11	55.56	22.22	238	97.94	3.36	26.89	46.22	23.53
***	***	***	***	***	***	92	96.84	2.17	38.04	36.96	22.83
63	100.00	0.00	14.29	38.10	47.62	350	98.59	0.57	10.86	27.43	61.14
41	100.00	2.44	12.20	39.02	46.34	359	98.09	2.23	23.40	32.87	41.50
44	100.00	2.27	15.91	45.45	36.36	330	97.92	1.21	16.36	37.88	44.55
27	100.00	7.41	22.22	44.44	25.93	373	97.39	2.41	28.69	41.55	27.35
***	***	***	***	***	***	58	96.67	0.00	53.45	31.03	15.52
N/A	N/A	N/A	N/A	N/A	N/A	***	***	***	***	***	***
N/A	N/A	N/A	N/A	N/A	N/A	***	***	***	***	***	***

## ALABAMA READING AND MATHEMATICS TEST

The Alabama Reading and Mathematics Test provides an assessment of students' mastery of the content contained in the Alabama Course of Study. The Reading and Mathematics Test was given in grades three through eight.

\*\*\* = Less than 10 students tested

N/D = No Data Available

N/A = Not Applicable

N/R = Not Reported

# STUDENT ACADEMIC PERFORMANCE

	READING											
	SCHOOL						SYSTEM					
			Level 1	Level 2	Level 3	Level 4			Level 1	Level 2	Level 3	Level 4
	Number Tested	Percent Tested	Percent Not Meeting Standard	Percent Partially Meeting Standard	Percent Meeting Standard	Percent Exceeding Standard	Number Tested	Percent Tested	Percent Not Meeting Standard	Percent Partially Meeting Standard	Percent Meeting Standard	Percent Exceeding Standard
<b>Grade 6</b>												
All Students	N/A	N/A	N/A	N/A	N/A	N/A	700	97.36	1.29	19.29	27.00	52.43
Special Education	N/A	N/A	N/A	N/A	N/A	N/A	92	86.79	5.43	61.96	27.17	5.43
American Indian / Alaskan	N/A	N/A	N/A	N/A	N/A	N/A	***	***	***	***	***	***
Asian / Pacific Islander	N/A	N/A	N/A	N/A	N/A	N/A	***	***	***	***	***	***
Black	N/A	N/A	N/A	N/A	N/A	N/A	272	96.45	1.10	29.78	37.13	31.99
Hispanic	N/A	N/A	N/A	N/A	N/A	N/A	67	98.53	4.48	35.82	26.87	32.84
White	N/A	N/A	N/A	N/A	N/A	N/A	355	97.80	0.28	7.89	19.72	72.11
Male	N/A	N/A	N/A	N/A	N/A	N/A	339	96.86	1.47	25.96	26.84	45.72
Female	N/A	N/A	N/A	N/A	N/A	N/A	361	97.83	1.11	13.02	27.15	58.73
Free / Reduced Meals	N/A	N/A	N/A	N/A	N/A	N/A	386	96.74	2.33	29.79	34.97	32.90
Limited-English Proficient	N/A	N/A	N/A	N/A	N/A	N/A	37	97.37	13.51	48.65	27.03	10.81
Migrant	N/A	N/A	N/A	N/A	N/A	N/A	***	***	***	***	***	***
Displaced	N/A	N/A	N/A	N/A	N/A	N/A	***	***	***	***	***	***
<b>Grade 7</b>												
All Students	N/A	N/A	N/A	N/A	N/A	N/A	670	97.53	1.04	22.39	32.69	43.88
Special Education	N/A	N/A	N/A	N/A	N/A	N/A	90	88.24	5.56	65.56	22.22	6.67
American Indian / Alaskan	N/A	N/A	N/A	N/A	N/A	N/A	***	***	***	***	***	***
Asian / Pacific Islander	N/A	N/A	N/A	N/A	N/A	N/A	***	***	***	***	***	***
Black	N/A	N/A	N/A	N/A	N/A	N/A	224	96.97	1.34	38.84	41.96	17.86
Hispanic	N/A	N/A	N/A	N/A	N/A	N/A	68	98.55	4.41	35.29	45.59	14.71
White	N/A	N/A	N/A	N/A	N/A	N/A	373	97.64	0.27	10.19	24.93	64.61
Male	N/A	N/A	N/A	N/A	N/A	N/A	339	96.58	2.06	27.14	30.38	40.41
Female	N/A	N/A	N/A	N/A	N/A	N/A	331	98.51	0.00	17.52	35.05	47.43
Free / Reduced Meals	N/A	N/A	N/A	N/A	N/A	N/A	325	96.44	1.85	36.31	39.38	22.46
Limited-English Proficient	N/A	N/A	N/A	N/A	N/A	N/A	38	100.00	7.89	55.26	36.84	0.00
Migrant	N/A	N/A	N/A	N/A	N/A	N/A	***	***	***	***	***	***
Displaced	N/A	N/A	N/A	N/A	N/A	N/A	***	***	***	***	***	***
<b>Grade 8</b>												
All Students	N/A	N/A	N/A	N/A	N/A	N/A	691	96.78	1.30	24.89	37.05	36.76
Special Education	N/A	N/A	N/A	N/A	N/A	N/A	88	88.89	6.82	64.77	23.86	4.55
American Indian / Alaskan	N/A	N/A	N/A	N/A	N/A	N/A	***	***	***	***	***	***
Asian / Pacific Islander	N/A	N/A	N/A	N/A	N/A	N/A	***	***	***	***	***	***
Black	N/A	N/A	N/A	N/A	N/A	N/A	237	95.18	0.84	37.13	47.26	14.77
Hispanic	N/A	N/A	N/A	N/A	N/A	N/A	77	98.72	6.49	44.16	29.87	19.48
White	N/A	N/A	N/A	N/A	N/A	N/A	368	97.35	0.54	12.50	32.07	54.89
Male	N/A	N/A	N/A	N/A	N/A	N/A	360	97.04	1.39	30.00	35.00	33.61
Female	N/A	N/A	N/A	N/A	N/A	N/A	331	96.50	1.21	19.34	39.27	40.18
Free / Reduced Meals	N/A	N/A	N/A	N/A	N/A	N/A	361	96.01	2.49	38.23	42.38	16.90
Limited-English Proficient	N/A	N/A	N/A	N/A	N/A	N/A	43	100.00	11.63	67.44	18.60	2.33
Migrant	N/A	N/A	N/A	N/A	N/A	N/A	***	***	***	***	***	***
Displaced	N/A	N/A	N/A	N/A	N/A	N/A	***	***	***	***	***	***

\*\*\* = Less than 10 students tested

N/D = No Data Available

N/A = Not Applicable

N/R = Not Reported

# STUDENT ACADEMIC PERFORMANCE

## MATHEMATICS

SCHOOL						SYSTEM					
		Level 1	Level 2	Level 3	Level 4			Level 1	Level 2	Level 3	Level 4
Number Tested	Percent Tested	Percent Not Meeting Standard	Percent Partially Meeting Standard	Percent Meeting Standard	Percent Exceeding Standard	Number Tested	Percent Tested	Percent Not Meeting Standard	Percent Partially Meeting Standard	Percent Meeting Standard	Percent Exceeding Standard
N/A	N/A	N/A	N/A	N/A	N/A	696	96.80	0.00	29.31	44.11	26.58
N/A	N/A	N/A	N/A	N/A	N/A	92	86.79	0.00	76.09	21.74	2.17
N/A	N/A	N/A	N/A	N/A	N/A	***	***	***	***	***	***
N/A	N/A	N/A	N/A	N/A	N/A	***	***	***	***	***	***
N/A	N/A	N/A	N/A	N/A	N/A	270	95.74	0.00	44.07	47.04	8.89
N/A	N/A	N/A	N/A	N/A	N/A	67	98.53	0.00	44.78	40.30	14.93
N/A	N/A	N/A	N/A	N/A	N/A	353	97.25	0.00	14.73	42.78	42.49
N/A	N/A	N/A	N/A	N/A	N/A	337	96.29	0.00	31.16	45.70	23.15
N/A	N/A	N/A	N/A	N/A	N/A	359	97.29	0.00	27.58	42.62	29.81
N/A	N/A	N/A	N/A	N/A	N/A	383	95.99	0.00	41.78	47.26	10.97
N/A	N/A	N/A	N/A	N/A	N/A	37	97.37	0.00	64.86	32.43	2.70
N/A	N/A	N/A	N/A	N/A	N/A	***	***	***	***	***	***
N/A	N/A	N/A	N/A	N/A	N/A	***	***	***	***	***	***
N/A	N/A	N/A	N/A	N/A	N/A	670	97.53	0.00	35.97	37.76	26.27
N/A	N/A	N/A	N/A	N/A	N/A	90	88.24	0.00	86.67	11.11	2.22
N/A	N/A	N/A	N/A	N/A	N/A	***	***	***	***	***	***
N/A	N/A	N/A	N/A	N/A	N/A	***	***	***	***	***	***
N/A	N/A	N/A	N/A	N/A	N/A	224	96.97	0.00	55.36	35.71	8.93
N/A	N/A	N/A	N/A	N/A	N/A	69	100.00	0.00	53.62	37.68	8.70
N/A	N/A	N/A	N/A	N/A	N/A	372	97.38	0.00	21.24	39.52	39.25
N/A	N/A	N/A	N/A	N/A	N/A	339	96.58	0.00	39.53	33.92	26.55
N/A	N/A	N/A	N/A	N/A	N/A	331	98.51	0.00	32.33	41.69	25.98
N/A	N/A	N/A	N/A	N/A	N/A	325	96.44	0.00	52.92	36.31	10.77
N/A	N/A	N/A	N/A	N/A	N/A	38	100.00	0.00	76.32	21.05	2.63
N/A	N/A	N/A	N/A	N/A	N/A	***	***	***	***	***	***
N/A	N/A	N/A	N/A	N/A	N/A	***	***	***	***	***	***
N/A	N/A	N/A	N/A	N/A	N/A	685	95.94	0.00	29.93	45.55	24.53
N/A	N/A	N/A	N/A	N/A	N/A	86	86.87	0.00	73.26	26.74	0.00
N/A	N/A	N/A	N/A	N/A	N/A	***	***	***	***	***	***
N/A	N/A	N/A	N/A	N/A	N/A	***	***	***	***	***	***
N/A	N/A	N/A	N/A	N/A	N/A	235	94.38	0.00	43.40	49.36	7.23
N/A	N/A	N/A	N/A	N/A	N/A	77	98.72	0.00	53.25	40.26	6.49
N/A	N/A	N/A	N/A	N/A	N/A	364	96.30	0.00	16.21	44.51	39.29
N/A	N/A	N/A	N/A	N/A	N/A	353	95.15	0.00	34.84	40.51	24.65
N/A	N/A	N/A	N/A	N/A	N/A	332	96.79	0.00	24.70	50.90	24.40
N/A	N/A	N/A	N/A	N/A	N/A	358	95.21	0.00	46.09	45.81	8.10
N/A	N/A	N/A	N/A	N/A	N/A	43	100.00	0.00	72.09	27.91	0.00
N/A	N/A	N/A	N/A	N/A	N/A	***	***	***	***	***	***
N/A	N/A	N/A	N/A	N/A	N/A	***	***	***	***	***	***

## ALABAMA READING AND MATHEMATICS TEST

The Alabama Reading and Mathematics Test provides an assessment of students' mastery of the content contained in the Alabama Course of Study. The Reading and Mathematics Test was given in grades three through eight.

\*\*\* = Less than 10 students tested

N/D = No Data Available

N/A = Not Applicable

N/R = Not Reported

# STUDENT ACADEMIC PERFORMANCE

## Alabama Alternate Assessment 2006

The Alabama Alternate Assessment is designed for students with disabilities whose Individualized Education Program [IEP] team determines that the student will not participate in the regular state assessments.

READING											
SCHOOL						SYSTEM					
		Level 1	Level 2	Level 3	Level 4			Level 1	Level 2	Level 3	Level 4
Number Tested	Percent Tested	Percent Not Meeting Standard	Percent Partially Meeting Standard	Percent Meeting Standard	Percent Exceeding Standard	Number Tested	Percent Tested	Percent Not Meeting Standard	Percent Partially Meeting Standard	Percent Meeting Standard	Percent Exceeding Standard
All Students	N/A	N/A	N/A	N/A	N/A	71	0.82	2.82	2.82	46.48	47.89

MATHEMATICS											
SCHOOL						SYSTEM					
		Level 1	Level 2	Level 3	Level 4			Level 1	Level 2	Level 3	Level 4
Number Tested	Percent Tested	Percent Not Meeting Standard	Percent Partially Meeting Standard	Percent Meeting Standard	Percent Exceeding Standard	Number Tested	Percent Tested	Percent Not Meeting Standard	Percent Partially Meeting Standard	Percent Meeting Standard	Percent Exceeding Standard
All Students	N/A	N/A	N/A	N/A	N/A	71	0.82	0.00	1.41	60.56	38.03

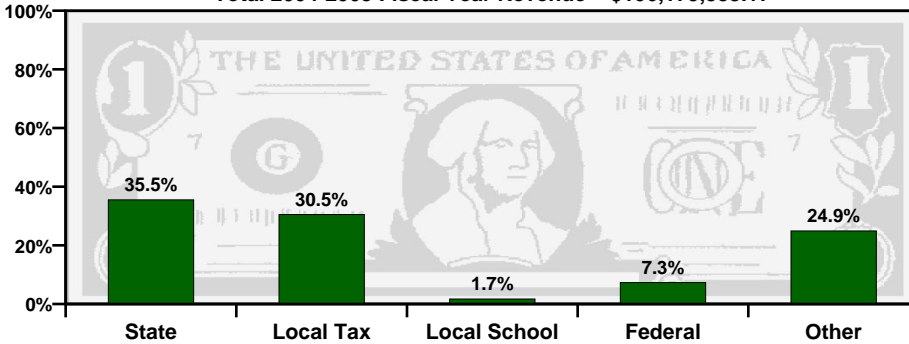
## Alabama Direct Assessment of Writing 2006

Alabama students in grades five, seven, and ten are given the Alabama Direct Assessment of Writing each year to measure their writing skills. This table shows how well students met the performance standard of this test.

SCHOOL						SYSTEM						
		Level 1	Level 2	Level 3	Level 4			Level 1	Level 2	Level 3	Level 4	
Number Tested	Percent Tested	Percent Not Meeting Standard	Percent Partially Meeting Standard	Percent Meeting Standard	Percent Exceeding Standard	Number Tested	Percent Tested	Percent Not Meeting Standard	Percent Partially Meeting Standard	Percent Meeting Standard	Percent Exceeding Standard	
Grade 5	83	97.65	1.20	21.69	62.65	14.46	677	96.30	3.99	19.50	59.53	16.99
Grade 7	N/A	N/A	N/A	N/A	N/A	N/A	639	93.01	5.63	18.47	60.41	15.49
Grade 10	N/A	N/A	N/A	N/A	N/A	N/A	621	91.46	2.09	18.20	51.53	28.18

# TAXPAYERS' REPORT - FISCAL YEAR 2005

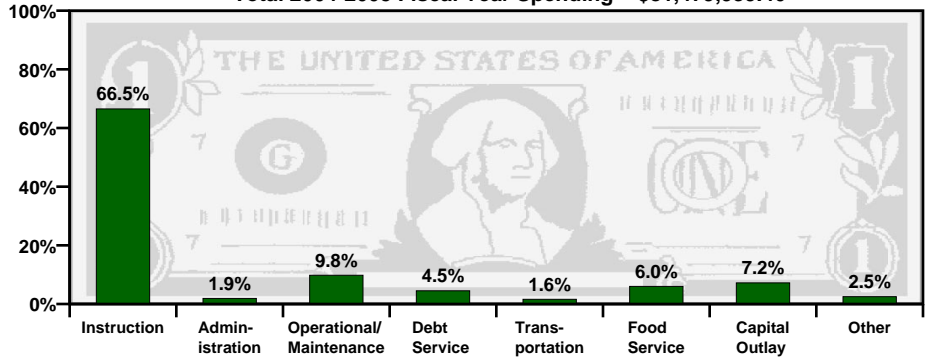
Total 2004-2005 Fiscal Year Revenue = \$106,179,553.17



## Sources of School System Revenues

Total 2004-2005 Fiscal Year Spending = \$81,479,939.40

## School System's Use of Funds



SOURCE of REVENUE	AMOUNT
Local School Revenue	\$1,832,958.96
Local Capital Projects Revenue	\$269,131.84
Other Local Revenue (includes local taxes)	\$32,108,099.93
<b>Total Local Revenue</b>	<b>\$34,210,190.73</b>

## Local Revenue Breakdown

This table provides a breakdown of local revenues for fiscal year 2005. The revenue from local school projects / activities and the capital projects fund have been itemized to provide a more complete analysis of local fund sources.

## Mills Equivalent

This is the total amount of revenue collected locally for public school purposes, divided by the value of one regular system mill of ad valorem tax. The state average is 32.87 mills equivalent.

This System	Grade
60.55	A

## Spending per Student

The table below shows the spending per student for this school system. The letter grade compares the system's per student spending to the state, southeast, and nation.

Year	Amount	State	Southeast	Nation
2003-2004	\$7,295.42	B	C	D+
2004-2005	\$7,924.76	A-	B	C-

A = Excellent

B = Good

C = Average

D = Poor

F = Fail





